

**New Bridge** served as a battleground, fort, encampment ground, military headquarters, and intelligence-gathering post in every year of the American Revolutionary War.

**Famous Faces of New Bridge during the American Revolution:**

WASHINGTON headquartered here for 16 days in 1780, **Thomas Paine**, Major General Friedrich Wilhelm **Baron von Steuben**, Major General **Marie Joseph du Motier, Marquis de LaFayette**, Major General **Nathanael Greene**, Major General **Anthony Wayne**, Royal Governor **William Franklin**, Founding Fathers **Aaron Burr** and **Alexander Hamilton**, Lt. Col. **Henry Lee**, Capt. **John Outwater**, Major **John Andre**, Lt. General Sir **Henry Clinton**, Lieutenant General **Charles Lord Cornwallis**, Major General **Charles Grey**, Capt. **Patrick Ferguson**, Col. **Francis Lord Rawdon**, Lt. Col. **Stephen Kemble**, Capt. **Johann Ewald**, Brigadier General **Cortland Skinner**, Lt. **James Moody** were all at New Bridge during the American Revolution. Per military historian Todd Braisted.

0414.1



**Bergen County Historical Society**  
PO Box 55, River Edge, New Jersey 07661-0055  
contactBCHS@bergencountyhistory.org  
[www.bergencountyhistory.org](http://www.bergencountyhistory.org)

**Historic New Bridge Landing** is open for special events by BCBS volunteers. See website for event schedule, more history, mobile app and map. BCBS members receive event email blasts and postcards.

**BCBS:** The Bergen County Historical Society is a nonprofit 501(c)(3) all-volunteer organization, founded in 1902. We are not a government agency. We do not seek public operating grants, instead we rely on private donations and membership. We are raising funds to build a museum for our extensive collections of artifacts and archives. BCBS is proud to be the lead member of the Historic New Bridge Landing Park Commission.

**DIRECTIONS:** The entrance to Historic New Bridge Landing is located on the west bank of the Hackensack River on Main Street, River Edge, NJ. Nearby streets are marked with brown Historic New Bridge Landing signs. HNBL is only 7 miles from New York City via the George Washington Bridge (take Route 4 West). Or, take the Garden State Parkway (Exit 161) or Rte 17 to Rte 4 East. From either direction, take Hackensack Ave North, go through 2 lights and bear right on jughandle for Main Street, River Edge. The parking lot is located at corner of Hackensack Ave and Main St by the large blue HNBL entrance sign. HNBL is only 1 block from the New Bridge Landing Train Station on the Pascack Valley line, which connects Hoboken, Secaucus and Spring Valley, NY. Visit [nitransit.com](http://nitransit.com) **Map Search:** 1201 Main St, River Edge, NJ.

**100% of your donation goes to our mission**  
[bergencountyhistory.org](http://bergencountyhistory.org)

**Just some of the BCBS artifacts – all made or used in Bergen County:**

- Van Saun and Wolfkiel slip-decorated red ware and salt-glazed pottery
- Quilts, 3 dozen, including the exceptional Betsy Haring appliqué quilt
- Bergen Dutch ladder-back chairs
- Flattened musket balls that struck the Steuben House in Rev War
- Medicine chest of Dr. John Garretson, of Campgaw, including original tools, bottles and herbal remedies

Daguerreotype of Betty. Born into slavery at time of Rev War, emancipated in 1840, died in 1871 at New Bridge

15-foot white-oak dugout canoe, unearthed in Hackensack in 1868

English bacon settle, dating to 1767

Effigy pipe, found in Hackensack

1670 wax doll, with a cloth body stuffed with sawdust, formerly belonging to Dr. John Redmond Coxe, of Trenton

Hackensack “matchstick” furniture

David Arnot’s oil painting of the Banta Docks on the Hackensack River, c.1860

Only known large “crayon portraits” done by James Van Dyke, depicting sons of Daniel P. Demarest of the Flatts (Oradell)

John Hopper’s tavern sign with portrait of Jefferson, done in Jefferson’s lifetime

Goddess Cybele in her Chariot – 3 water colors by Margaret Van Wagoner c.1830

18th century bed; family tradition maintains George Washington slept in it in 1780

Bergen Dutch jacquard-woven coverlets

Extensive library & rare document collection

Zinc cigar store Indian

Chip-carved spoonboards

Button collection

Brick collection!



coverlet motif

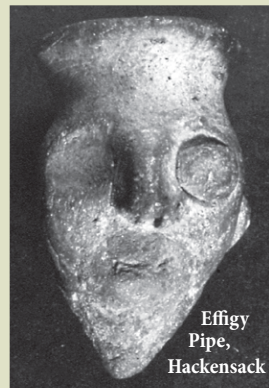
Some items on exhibit – We have a fundraising campaign to build a museum at New Bridge to care for collections.



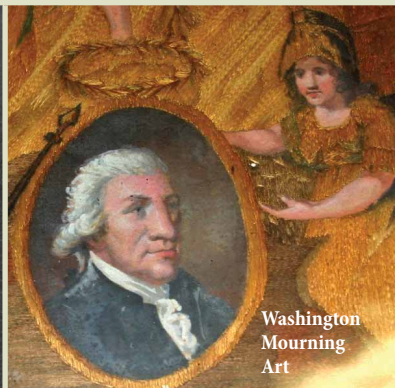
Watercolor, Cybele in her Chariot



Betty, lived at New Bridge



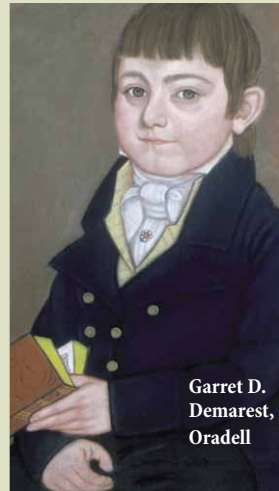
Effigy Pipe, Hackensack



Washington Mourning Art



Quilt by Betsy Haring



Garret D. Demarest, Oradell



BCBS Blue Markers are located throughout the county – website has marker booklet [www.bergencountyhistory.org](http://www.bergencountyhistory.org)

**Historic New Bridge Landing**

Bergen County, Where America Begins



Experience history in one of the storied places where it was made...



18th century tile BCBS collections

- Battleground in the American Revolution
- The Steuben House survived more of the American Revolution than any other home in America
- Washington’s headquarters for 16 days in 1780
- Distinctive Bergen County artifacts & architecture including 3 sandstone houses
- One of the last unspoiled vistas in the central valley of the Hackensack River
- 7 miles from the George Washington Bridge
- 2 blocks from the New Bridge Landing Train Station on the Pascack Valley Line to Secaucus

**WALKING TOUR**

**Historic Buildings Open for Special Events**  
Check Website for Schedule  
[www.bergencountyhistory.org](http://www.bergencountyhistory.org)

**Bergen County Historical Society**  
Historic New Bridge Landing  
1201 Main Street, River Edge, New Jersey